



Community Planning Assistance Teams



Autaugaville Town Park Master Plan

July 2025





Park walkthrough during the CPAT event



“I suggest great possibilities can happen for this town.”

TABLE OF CONTENTS

<u>Project Introduction</u>	<u>4</u>
<u>Community Engagement</u>	<u>16</u>
<u>Plan Development.....</u>	<u>22</u>
<u>Recommendations</u>	<u>34</u>
<u>Plan Implementation</u>	<u>38</u>
<u>Appendix</u>	<u>44</u>

1 Project Introduction



“With this being a small community I believe that it is important to have a safe space where the community can get together for events. This will help bring people together.”

Project Background

The Alabama Chapter of the American Planning Association Community Planning Assistance Team (AL-APA CPAT) program initiated a pilot project with the Town of Autaugaville in 2024. The Town requested assistance with updating their Town Park. The park was created in 1981 using LWCF grant funding.

Over the years, the Town has maintained and added amenities to the park, but has never had a park master plan to guide improvements. The CPAT team began meeting with the Town, and as a project team to develop recommendations for future actions. The team also worked with the community through a public survey, and park event that was held to work with local

residents to get input on what improvements are needed, and to better understand how the park is used. After several remote meetings, the team held an in-person charrette to design the layout of the park based on the feedback received from the community.

Town History

Autaugaville, Alabama, known as “America’s first crossroads,” was formally established in 1935*. The Town of Autaugaville adopted its first long range planning document, “Town of Autaugaville Comprehensive Plan,” in 2008; an updated comprehensive plan for the community was completed in 2020. The vision statement of the latter plan reads, **“To improve the quality of life of Autaugaville’s citizens through preservation of our rural character; by protecting our natural, historic and agricultural resources; while bringing about well-planned economic development, improved public services and the long-term fiscal stability of our community.”**



Town Location

The Town of Autaugaville is in south central Autauga County in the central portion of the State of Alabama. It has a total land area of 7.8 square miles, 7.2 land and 0.2 water, and a 2020 Decennial Census population of 795. **The youth population - newborn to 19 years old - accounts for 41.5% of the total population (330 residents) and the senior population - 65 years and older - accounts for 22.0% (175 residents).** The median age of the town’s residence is 42.6.

Source: Town of Autaugaville 2045 Comprehensive Plan, CARPDC

Community Profile

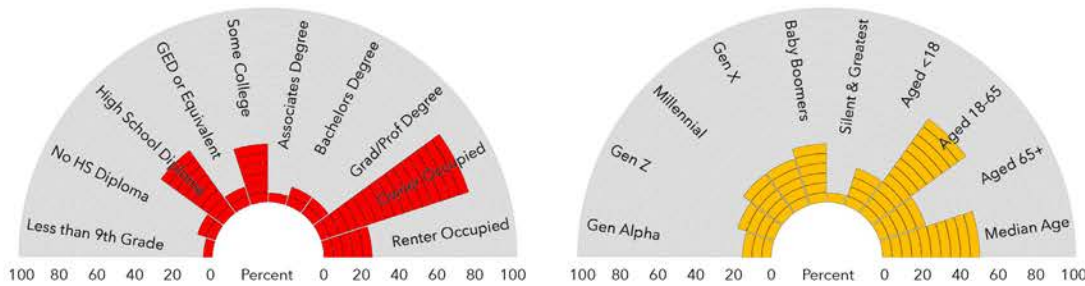
The community profile graphic on the following page shows a snapshot of the demographic and economic make-up of the Town.



Autauga County

Community Profile

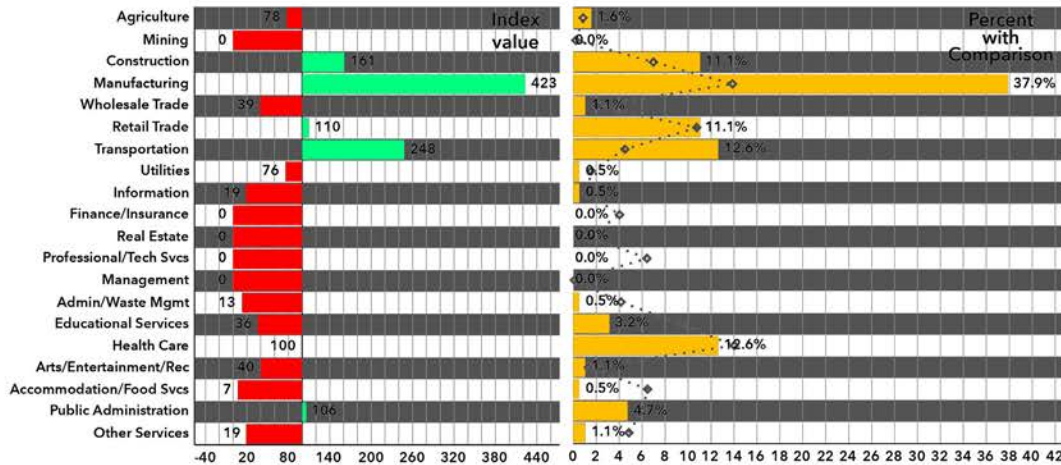
Autaugville Town, AL
 Geography: Place



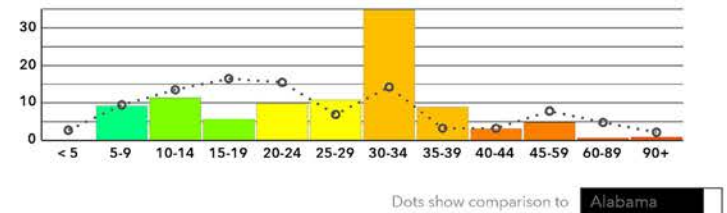
Key Facts

808	0.4	2.3	58.7	\$45,209	\$127,973	\$201,923			
Population Total	Pop Growth	Average HH Size	Diversity Index	Median HH Income	Median Net Worth	Median Home Value			
Less than 9th Grade	No HS Diploma	HS Diploma	GED or Equivalent	Some College	Associates Degree	Bachelor's Degree	Grad/Prof Degree	Owner Occupied	Renter Occupied
1.0%	8.0%	36.9%	6.0%	29.4%	4.0%	9.3%	5.5%	77.5%	22.5%
Gen Alpha	Gen Z	Millennial	Gen X	Boomers	Silent	Aged <18	Age 18-65	Aged 65+	Med Age
11.4%	16.0%	20.3%	20.7%	27.5%	4.2%	18.7%	57.2%	24.1%	46.8

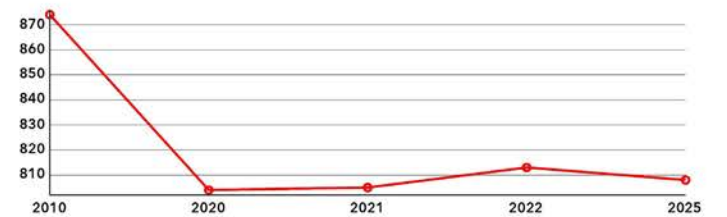
Labor Force by Industry



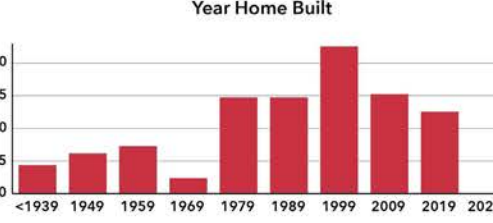
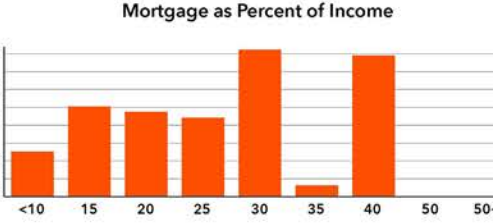
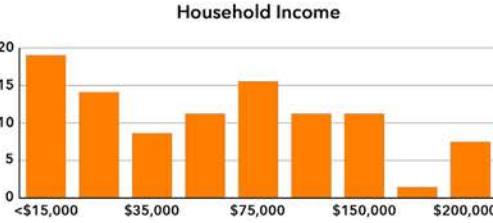
Commute Time (Minutes)



Population Trend (2010-2023)



Source: This infographic contains data provided by Esri (2025, 2030), ACS (2019-2023), U.S. Census (2010). Dots show comparison to Alabama



Poverty and Language

- 16.7%** Households Below the Poverty Level
- 73** Households Below the Poverty Level
- 0** Pop 65+ speak Spanish & No English

- 10.5%** Services
- 59.5%** Blue Collar
- 30.0%** White Collar

Household Vehicle Availability (ACS)

	Owner	Renter	Total
No Vehicles	22	38	60
1 Vehicle	88	56	144
2 Vehicles	53	28	81
3 Vehicles	70	0	70
4 Vehicles	39	0	39
5 or More Vehicles	44	0	44

- 0** Workers 16+ Took Public Transportation (ACS 5-Yr)
- 36** Workers 16+ Carpooled (ACS 5-Yr)
- 0** Workers 16+ Walked (ACS 5-Yr)
- 0** Workers 16+ Bicycled (ACS 5-Yr)

Household Poverty Levels (ACS)

	Below	At or Above	Total
Total	73	365	438
Married Couple Families	19	112	131
Other Families w/Male Householder	0	50	50
Other Families w/Female Householder	25	78	103
Nonfamilies w/Male Householder	14	86	100
Nonfamilies w/Female Householder	15	39	54

Language Spoken by Age (ACS)

	5-17	18-64	65+	Total
English Only	115	599	170	884
Spanish	9	18	0	27
Spanish & English Very Well/Well	9	18	0	
Spanish & English Not Well	0	0	0	0
Indo-European Language	0	5	5	5
Indo-European & English Very Well/Well	0	5	5	
Indo-European & English Not Well	0	0	0	0
Asian-Pacific Island Language	0	0	0	0
Asian-Pacific Island & English Very Well/Well	0	0	0	
Asian-Pacific Island & English Not Well	0	0	0	0
Other Language	0	0	0	0
Other Language & English Very Well/Well	0	0	0	
Other Language & English Not Well	0	0	0	0

Population and Poverty Status (ACS)

	Total
Population for whom Poverty Status is Determined	1,119
Income to Poverty Ratio <0.50	216
Income to Poverty Ratio 0.50-0.99	27
Income to Poverty Ratio 1.00-1.24	83
Income to Poverty Ratio 1.25-1.49	17
Income to Poverty Ratio 1.50-1.84	170
Income to Poverty Ratio 1.85-1.99	120
Income to Poverty Ratio 2.00+	486

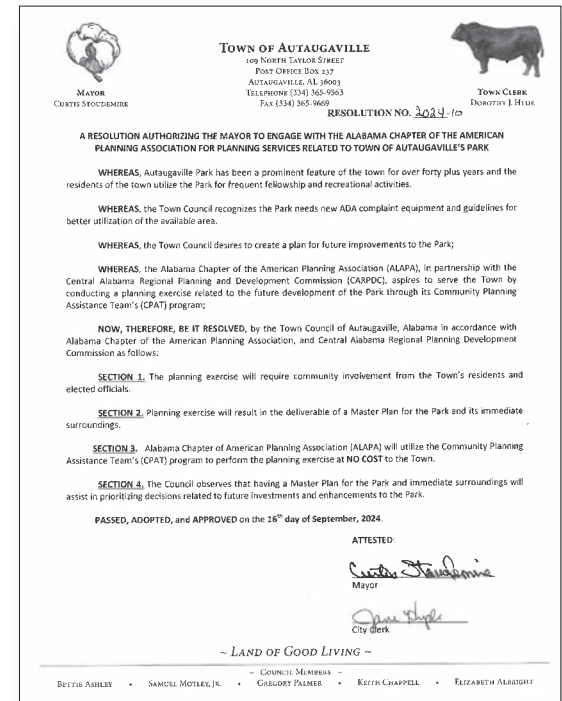
Source: This infographic contains data provided by Esri (2025, 2030), ACS (2019-2023), U.S. Census (2010).

Autaugaville Town Park

Autaugaville Park is accessible from Dutch Bend Street and Alabama State Route 14, the latter being the main thoroughfare that connects the town to Selma and Prattville. It is flanked by private residents on the south, Autaugaville School on the east, and undeveloped land on the north and west. The Town of Autaugaville 2045 Comprehensive Plan notes, “This 31-acre park is Autaugaville’s single Town-managed recreational facility... It features two baseball/softball fields, a walking trail, playground equipment, pavilion, basketball courts, tennis courts, and other recreation and natural facilities”. Further, the latter Plan notes a recommendation to:

“[g]ive consideration to enhancements at the Autaugaville Park facility”.

Source: Town of Autaugaville 2045 Comprehensive Plan, CARPDC

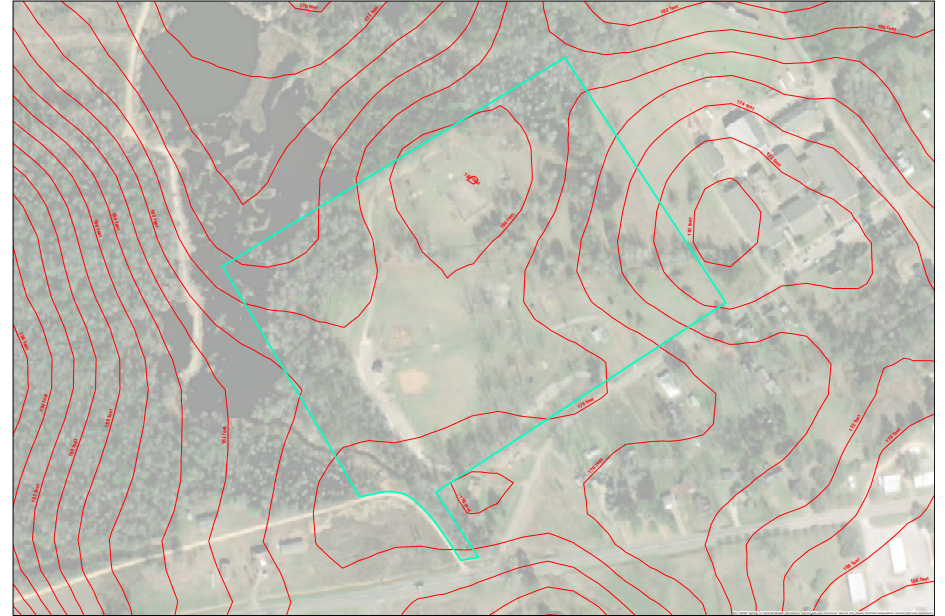


Town Resolution for CPAT project



Existing Conditions

The first step in the process was to research and collect as much data as we could on the current state of the park. This included several GIS mapping exercises to understand the topography and existing layout of the park features. Combined with the field survey, this gave us a good starting point to begin the design process.



2ft contours of the park site

Park Hydrology

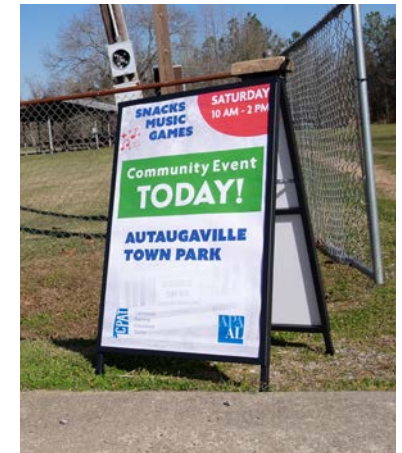


Park Documentation





2 Community Engagement



Overview

The CPAT team planned several methods of engagement to understand the community's perspective and to gather input related to what the residents would like to see in the park. The first effort was a community survey. The team received around 75 completed surveys. Secondly, the team planned and promoted a park event with the Town.

On March 22, 2025 the CPAT volunteers hosted a

community-wide event at the Town Park. This was an opportunity for the residents of Autaugaville to learn more about the project, and participate in activities to help the team gain a better understand of how the park is used, and what the residents would like to see in future updates.

We learned from the event and the community survey, that most residents utilize the park for the walking trial and the

playground areas, and would highly value improvements to both. The walking trails need a completed loop and the playground area should be located towards the front of the park for easy access and to increase safety.

Survey Results

One of the first tasks that the team began working on was creating a survey that we could distribute to the community. The online survey provided initial insight into the community’s perspective, and provided us with data that we used to plan the park engagement activities.

We also used this data along with the information compiled at the park event to help guide the recommendations for the Town.

What is one feature that you think would make this park unique?

45 responses

Playground equipments for children
Walking/Biking
Fishing Pond
Walking pads
Water feature for kids
pond
landscape
Historic Information Safe-Open Space
Splash pad

Would you prefer the park to include educational or cultural elements (e.g., historical markers, nature exhibits)?

63 responses

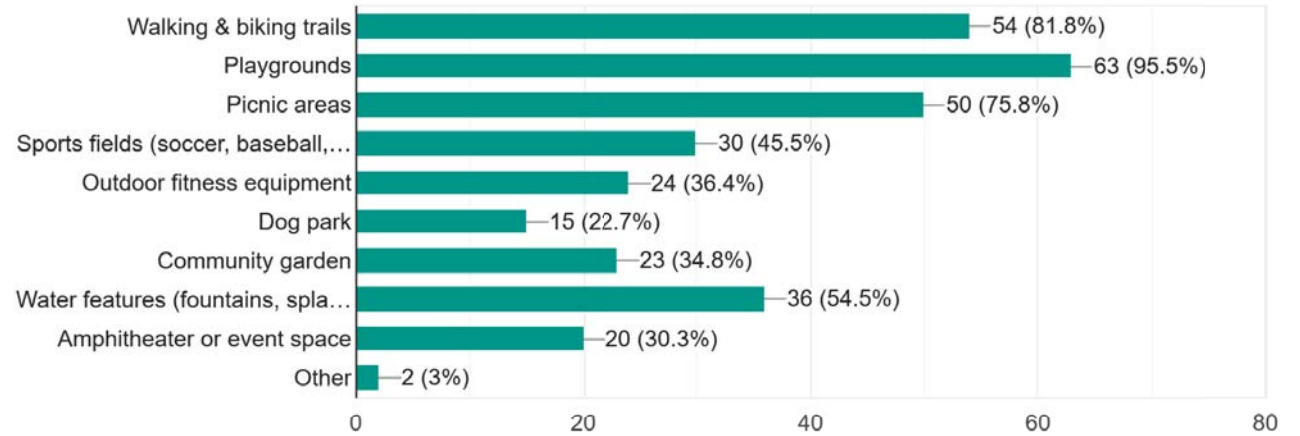


What types of activities would you like to see in the park? (Select all that apply)

66 responses

1. Playgrounds
2. Walking & Biking Trails
3. Picnic Areas

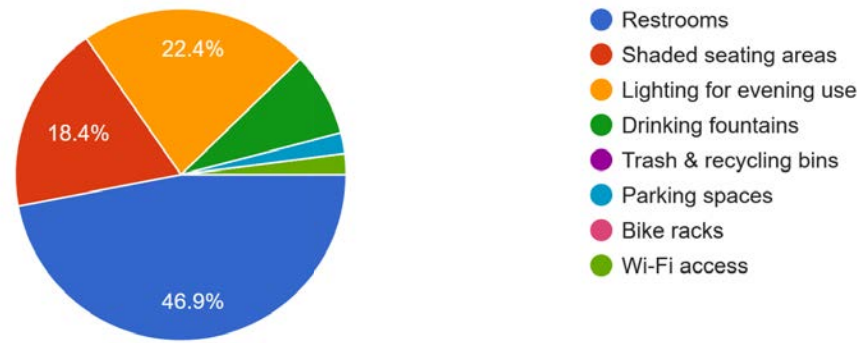
These were the top 3 activities that respondents to the survey expressed interest in seeing with new improvements to the park.



Restrooms ranked #1 as the most important amenity, followed by lighting and shaded seating areas.

What amenities are most important to you?

49 responses



Outreach Event Activities

During the park event, we had several activities for the community to participate in giving them an opportunity to share their feedback:

- Visual preference boards
- Brainstorming
- Surveys

Many residents voted on the ideas of including more lighting and shaded areas in the park, in addition to those upgrades already expressed in the survey (i.e. trails, playground).

A community garden was another idea that had some support and could be a value asset, one that could be a partnership with local groups.

What would you like to see in the park?

Splashpad

 [Red dots for voting]

Playground

 [Red dots for voting]

Biking / Walking Trails

 [Red dots for voting]

Lighting

 [Red dots for voting]

Restrooms

 [Red dots for voting]

Covered Seating

 [Red dots for voting]

AUTAUGAVILLE TOWN PARK

Community Learning Basketball Center CPAT Community Learning Basketball Center

3 Plan Development



Collaborative Process

The CPAT met consistently throughout the life of the project to define roles and establish the workplan for the project. Each team member represented a specific skillset and area of expertise to contribute to the plan development phase.

Once the community event was completed, the team compiled the public input and held an in-person charrette to begin creating the conceptual plan for the park. Much of the

public input was incorporated into the proposed design. The following chapter details the design process.

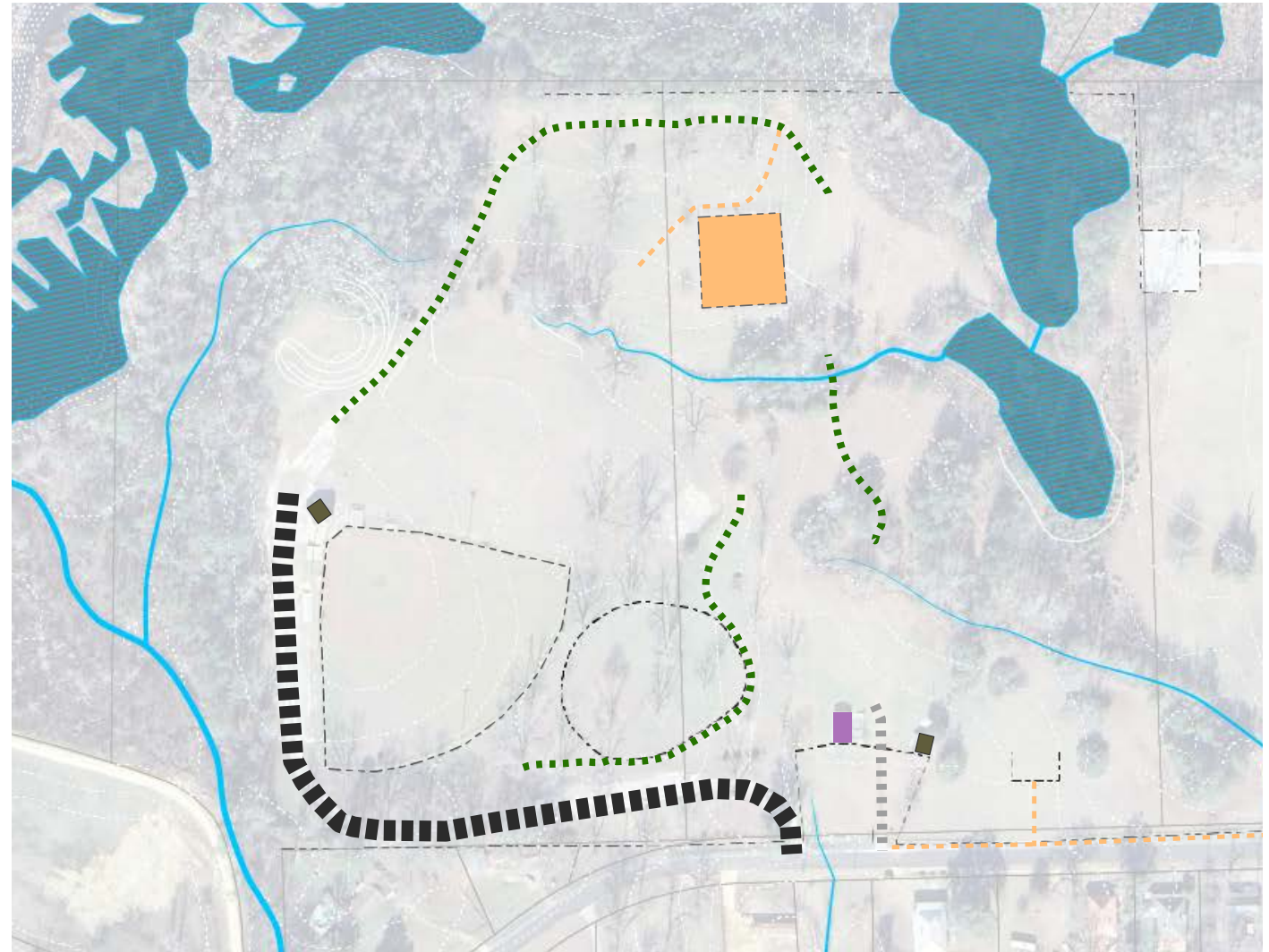


Project Team meeting

Existing Walkways

The current roadways and walkways in the park are in need of repair, and they do not currently create a complete loop or network.

This map illustrates the existing entry road and paved sections of the walking paths.



Map for diagrammatic purposes only

Space Programming

This map shows the high-level themes for the organization of park programming.

The team attempted to coordinate the spaces in the park based on use.

It was important to consolidate the play and activity areas towards the front of the park for easy access and safety.

Natural areas form the border of the park create a buffer to the surrounding land.

Sports and recreation areas divide the park with community gathering and potential future event area.



Map for diagrammatic purposes only

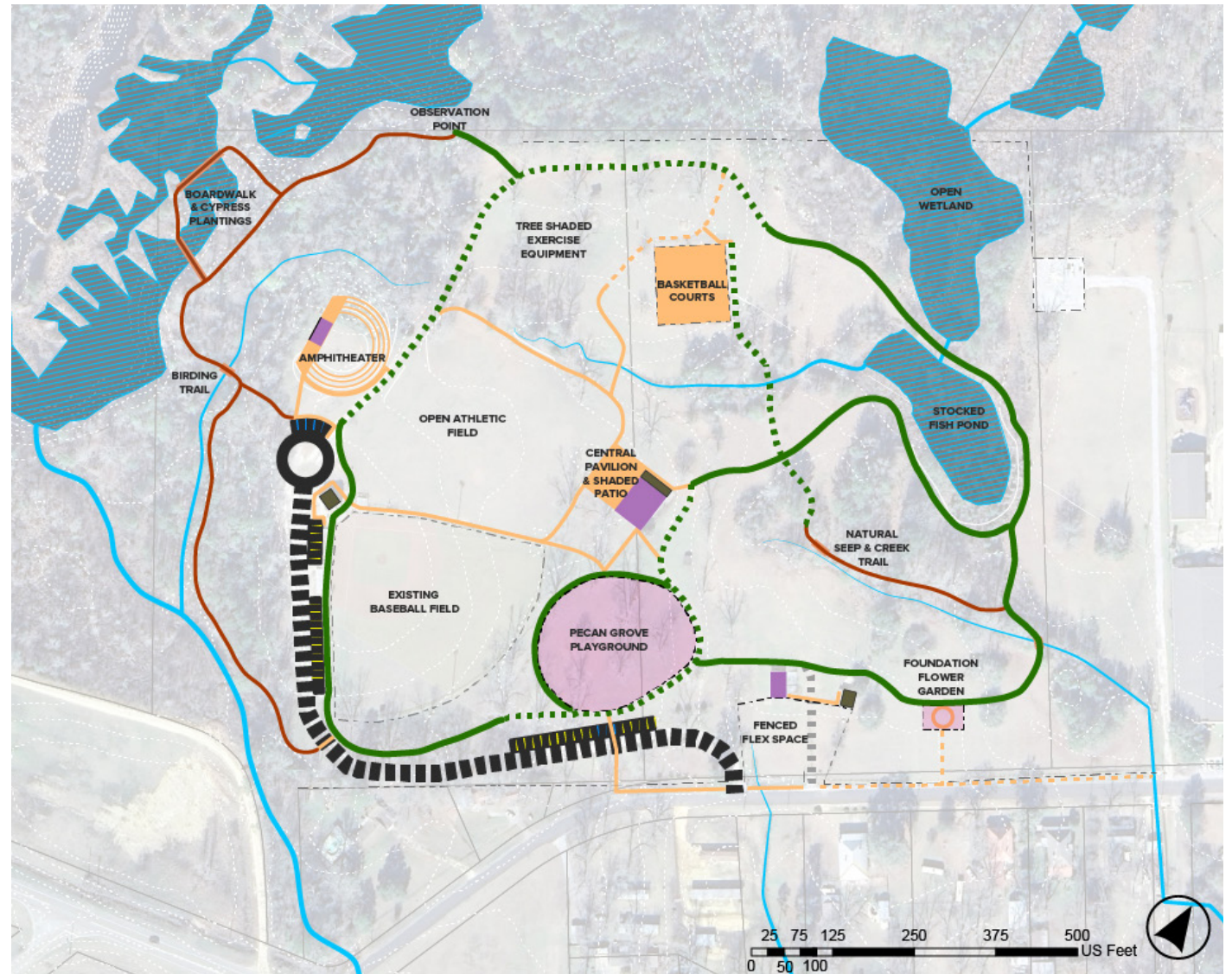
Final Park Concept

Pecan Grove Park Concept

Autaugaville, AL

Scale: 1"=140'

- Conceptual Boardwalk (170 ft)
- Conceptual Natural Trail (1900 ft)
- - - Existing Greenway
- Conceptual Greenway (3400 ft)
- - - Existing Sidewalk
- Conceptual Sidewalk (2400 ft)
- Existing Gravel Bed
- Existing Road
- Conceptual Road Paving (225 ft)
- Parking spaces (30-40)
- New Fencing (875 ft)
- Old Fencing
- Waterbody
- Stream
- Pavilion
- Patio or Paved Court
- Fenced Mulched Area
- Building with Restroom



Illustrated Park Plan





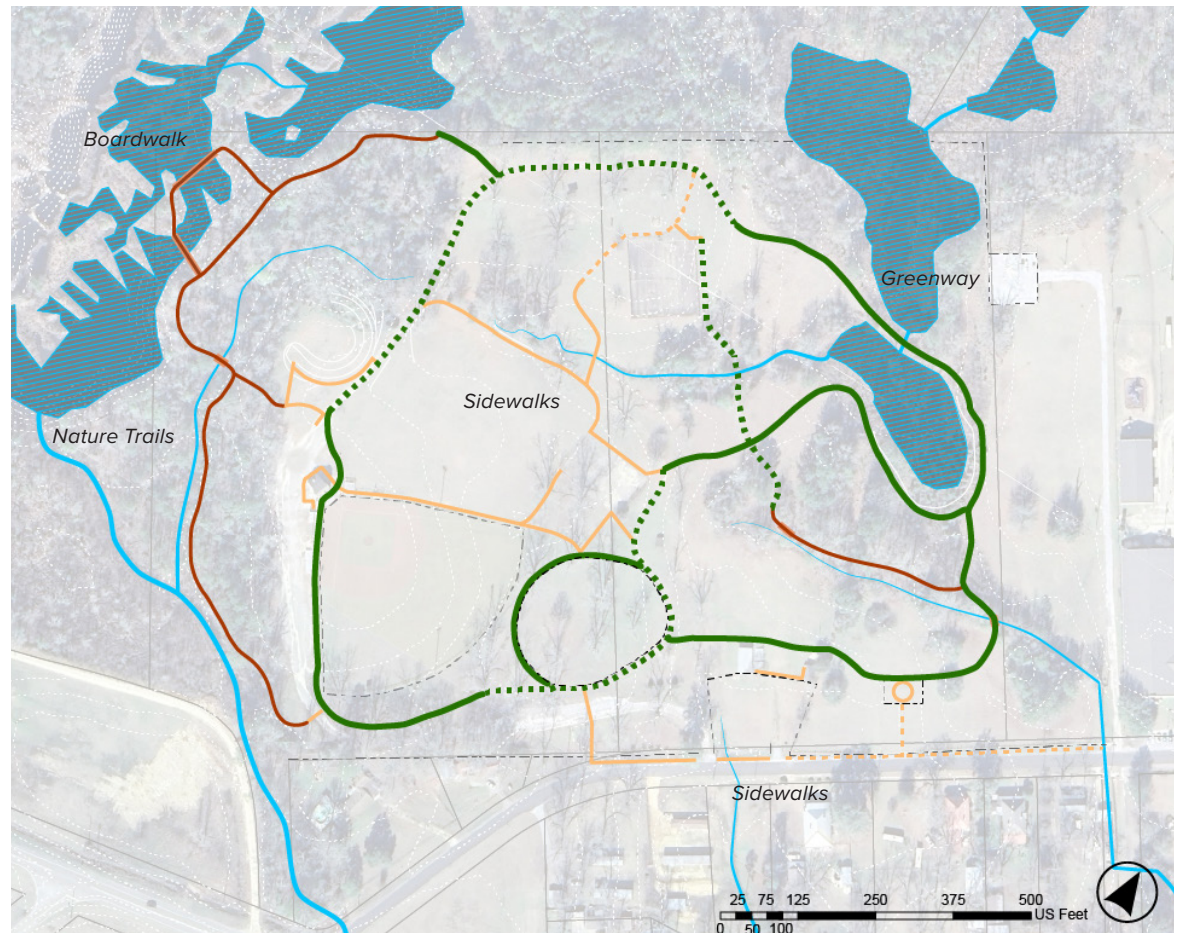
Boardwalk example



Greenway example

Pedestrian Network

This diagram illustrates the proposed network of sidewalks, walking paths, and trails throughout the park, that builds off the existing paths.





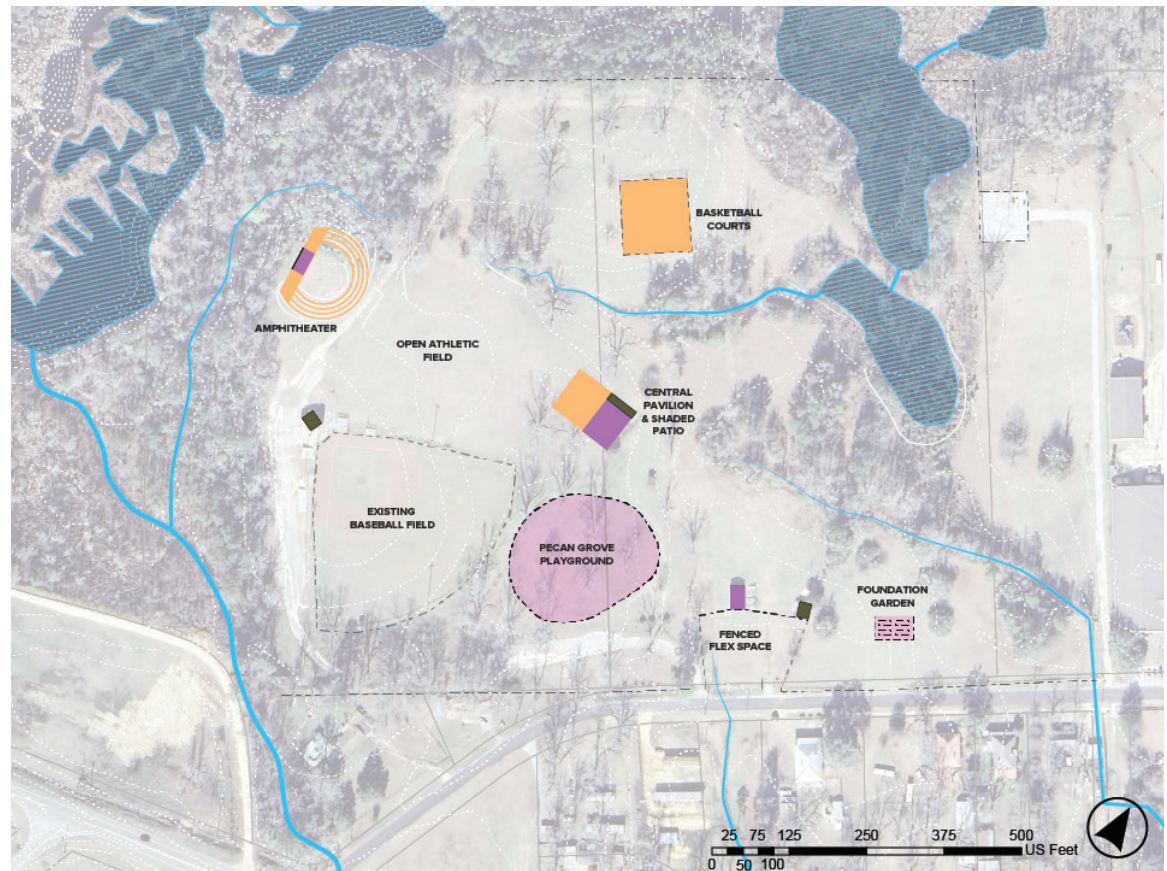
Park pavilion example



Community garden example

Park Structures

This diagram shows the proposed layout of future built projects in the park, and attempts to maintain the existing footprint of existing foundations.

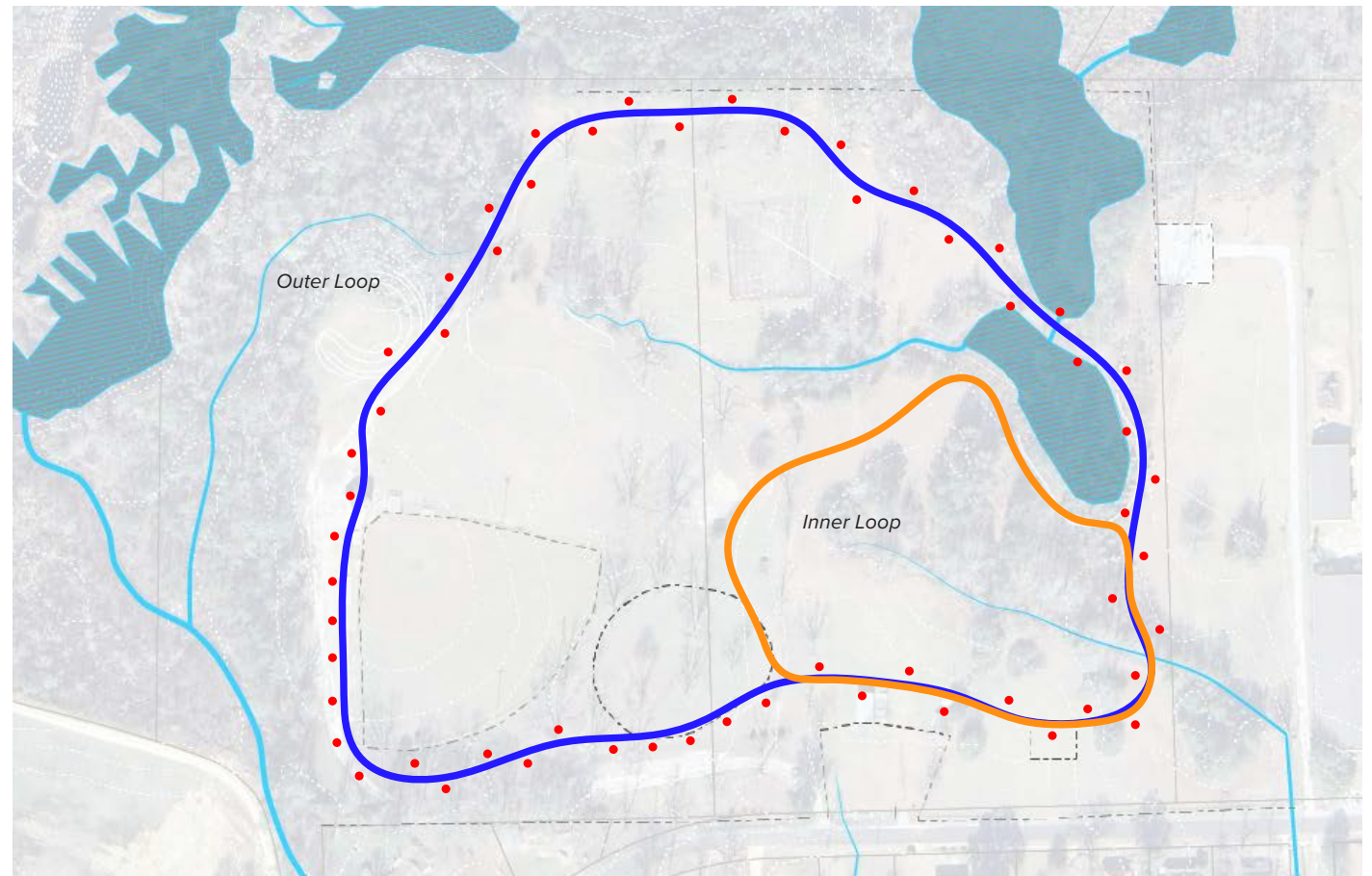


Lighting Plan

Improve Park Lighting at the entrance to the park and in all parking areas.

Install pedestrian lighting around the inner and outer loop of the park trails.

Lighting should also be designed specifically for the gathering areas, like the pavilion and playground.



Lighting Design

Detailed Lighting Plan and specifications should consider aligning with the principles for responsible outdoor lighting.

Five Lighting Principles for Responsible Outdoor Lighting




Responsible outdoor lighting is	1 Useful	<p>Use light only if it is needed</p> <p>All light should have a clear purpose. Consider how the use of light will impact the area, including wildlife and their habitats.</p>	
	2 Targeted	<p>Direct light so it falls only where it is needed</p> <p>Use shielding and careful aiming to target the direction of the light beam so that it points downward and does not spill beyond where it is needed.</p>	
	3 Low Level	<p>Light should be no brighter than necessary</p> <p>Use the lowest light level required. Be mindful of surface conditions, as some surfaces may reflect more light into the night sky than intended.</p>	
	4 Controlled	<p>Use light only when it is needed</p> <p>Use controls such as timers or motion detectors to ensure that light is available when it is needed, dimmed when possible, and turned off when not needed.</p>	
	5 Warm-colored	<p>Use warmer color lights where possible</p> <p>Limit the amount of shorter wavelength (blue-violet) light to the least amount needed.</p>	

Rev: 08-2023

Source: DarkSky and the Illuminating Engineering Society (www.darksky.org)

Park Amenities

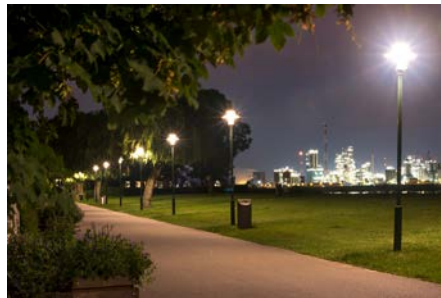
There are several amenities the Town could add throughout the park to improve the user experience and create a safer environment.

Seating throughout park and along walking trails

Consider partnering with local groups (e.g. woodworking groups, girl/boy scouts) to build and furnish benches

Lighting

Explore grant opportunities to fund installation.



Examples of park benches and lighting

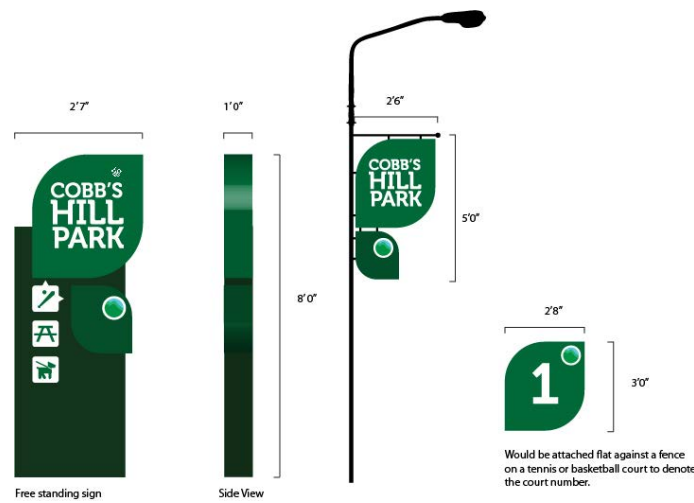
Park Identify & Signage

The Town would benefit from working with a graphic designer to create a unique and cohesive visual identity for Town Park.

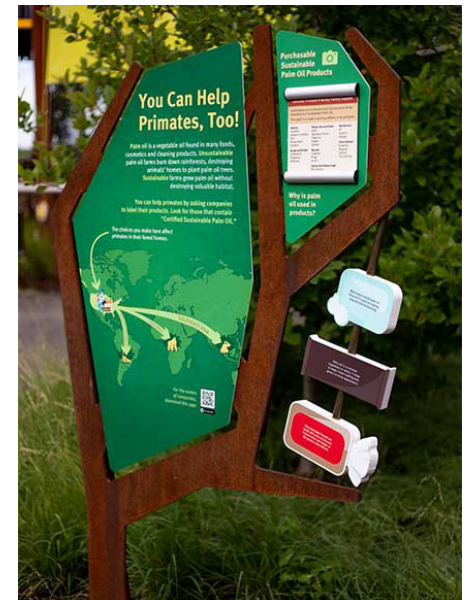
The effort should be thought of holistically as part of a larger system that could be implemented for future locations.

Suggested uses:

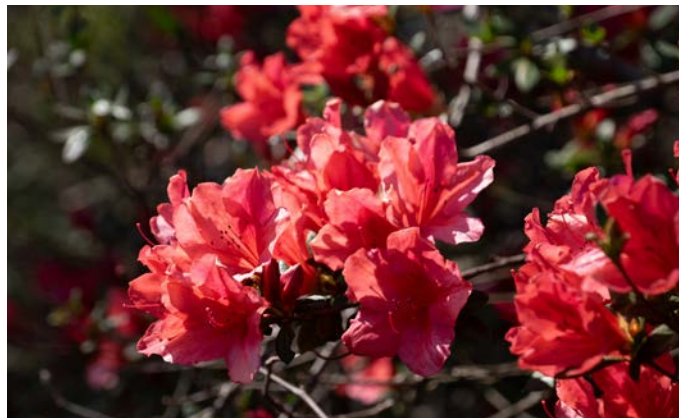
- Monument Entry Sign
- Birding Paths
- Interpretive Signage
- Boardwalks
- Wayfinding



Graphic examples of wayfinding and signage



4 Recommendations



Improvement Strategy

The community park event not only gave the team and opportunity to meet with the public, but it also gave team members time to explore the scope of the park in-person. This provided a new perspective on the size and features of the park, and helped draw conclusions that were initially based on the mapping exercises.

Meeting with the public, provided the basis for the improvements the CPAT team

wanted to recommend. We had a better understanding of how the park is used, and what additions would add value to the residents.

We created a matrix of improvements beginning with the timeframe it would take to complete the project, these are the “Short-term” improvements. These are organized by priority, from High to Low. Secondly, the “Long-term” improvements are

those that could be completed in a longer timeframe, because of scope and funding. These improvements are also ranked by priority.

General cost estimates were provided for each recommendation. This section will provide guidance to the Town when deciding what grants to apply for.

Proposed Short-term Improvements

High Priority	Improvement Type	Cost Estimates
Improve Walking Trail	Enhanced Health + Wellbeing	\$\$\$
Consolidate Playground Area	Promoting Physical Activity	Varies based on surface
Lighting	Beautification, Park Safety	\$\$\$
Wayfinding & Signage Update	Beautification, Park Circulation	\$

Low Priority	Improvement Type	Cost Estimates
Flex Athletic Field	Promoting Physical Activity	Labor
Flex Fenced Space	Community, Park Safety	\$
Community Garden	Enhanced Health, Well-being	\$

Cost Scale: **\$** - Less than \$25k **\$\$** = \$25k - \$ 50k **\$\$\$** - Over \$50k

Proposed Long-term Improvements

High Priority	Improvement Type	Cost Estimates
New Pavilion	Community Gathering	\$\$\$
Fishing Pond	Recreation, Physical Activity	\$\$\$
Upgrade Basketball Courth	Health, Physical Activity	\$\$

Low Priority	Improvement Type	Cost Estimates
Amphitheater	Community Gathering	\$\$\$
New Parking Area	ADA, Enhanced Access, Equity	\$\$
Boardwalk Nature Trail	Nature Activity, Sustainability	\$\$

Cost Scale: **\$** - Less than \$25k **\$\$** = \$25k - \$ 50k **\$\$\$** - Over \$50k

5 Plan Implementation



Funding Strategies

Implementation is the part of the planning process that reveals the success of the plan. This section is a guide for the Town to identify what type of funding is available for the recommendations.

Once the Town establishes its priorities and what projects they want to pursue they can consult the following charts to determine what is the most feasible funding source.

Funding Sources: Federal and State

Grant	Project Type	Funding Agency	Funding Cycle	Match / Shared Cost	Eligible Project
CDBG-CE	Multiple	ADECA	Summer	10%	Community Centers, Senior Center, Recreational facilities
Land and Water Conservation Fund	Recreation	ADECA	Fall	50%	Outdoor recreation assets and support Facilities (e.g. restrooms)
Recreational Trails Program	Recreation	ADECA	Fall	20%	Construction of new trails and maintenance
State Economic and Infrastructure Development Grant	Recreation	SCRC	Spring	50%	
Community Facilities Direct Loan & Grant Program	Multiple	Rural Development, USDA	Year-round	Direct Loan, Grant (graduated scale)	

Funding Sources: Corporate and Non-Profit

Grant	Project Type	Funding Agency	Funding Cycle	Match / Shared Cost	Eligible Project
AARP	Multiple	AARP		0%	Public spaces improvements, access, and walkability
T-Mobile Hometown Grant	Multiple	T-Mobile	Every quarter	0%	Build, rebuild, or refresh community spaces (e.g outdoor parks and ball fields)
Quadratec Cares “Energize the Environment”	Multiple	Quadratec	June 30th and October 30th	\$3,500	Trail building or restoration, litter prevention initiatives, sustainable land management activities and community environmental education projects
Collaborative Capacity Program for Forests & Communities	Multiple	The National Forest Foundation	July 25, 2025 (mini grant), Aug 1, 2025 (standard)	Mini grants (up to \$10k), Standard (up to \$75k with 20% match)	Supports partnerships that enhance recreation opportunities, improve forest health, and boost rural economies.

Funding Sources: Corporate and Non-Profit

Grant	Project Type	Funding Agency	Funding Cycle	Match / Shared Cost	Eligible Project
On Common Ground	Multiple	Trust for Public Land (TPL)		Up to \$30k	Supports parks and public space projects to foster social connection and bridge community divides
MLB-MLBPA Youth Development Foundation Grant	Multiple	MLB-MBLPA Youth Development Foundation	Annual		Funds may be used to support capital projects (e.g. field renovations), baseball/softball programs, and education initiatives.

Partners

Goal #2 of the Recreation/ Senior Services Goals in the Town’s Comprehensive Plan is to “[d]evelop partnerships within the community and region to make better use of available resources and increase funding sources through sponsorships for recreation facilities, special events, athletic tournaments, and other exhibitions.”

Below are agencies and organizations that may be of assistance with **grants and continued implementation support:**

- ADECA
- Autauga County
- CARPDC
- The Alabama Cooperative Extension

Below are agencies and organizations that may be of assistance to the Autaugaville greater community **to promote further design and planning work:**

- Alabama Chapter of the American Planning Association
- Design Alabama
- Your Town Alabama

6 Appendix





CPAT Purpose

The purpose of the Community Planning Assistance Teams program is to serve communities facing limited resources by helping them address planning issues such as social equity and affordability, economic development, sustainability, consensus building, and urban design, among others. By pairing expert urban planning professionals from around the country with residents and other stakeholders from local communities, the program seeks to foster education, engagement, and empowerment. As part of each team’s goals, a community develops a vision that promotes a safe, ecologically sustainable, economically vibrant, and healthy environment.

APA volunteers work with the community, key stakeholders, and the host organization(s) to assemble a team of planners with the specific expertise needed for the project. The team meets regularly over the course of the project, during which time a series of site visits, focused discussions, and analyses are performed. On the final day, the team reports their results back to the community. A more detailed report is issued to the community at a later date.

CPAT Values

Community assistance is built into the professional role of a planner. One principle of the AICP Code of Ethics and Professional Conduct states that certified planners shall aspire to “seek social justice by working to expand choice and opportunity for all persons, recognizing a special responsibility to plan for the needs of the disadvantaged and to promote racial and economic integration.” Another principle is that certified planners should aspire to “contribute time and effort to groups lacking in adequate planning resources and to voluntary professional activities.”

AL APA CPAT Team

Meshach Adams, Alabama A&M student

Laurey Hood, Auburn student

Lady Kassama, AICP

Sara Kovachich, PLA

Mac Martin, AICP


Phoenix Robinson

Broxton Sanders

Corey Sosebee, AICP

Trae Watson



A large, leafy tree stands in a grassy park area. In the background, a chain-link fence and a playground structure are visible under an overcast sky. A teal rectangular box is superimposed over the middle of the image, containing white text.

Thank you to Mayor Stoudemire, Town Council, Staff, and all the residents of Autaugaville who came out to support and participate in the park planning efforts of the Community Planning Assistance Team!

CPAT

APA
AL