



2012 ALAPA Awards

Outstanding Planning Award for a Comprehensive Plan

*Recognizes an outstanding comprehensive plan for a town,
city, county or region.*

*Alabama Chapter of the American
Planning Association*



2012 ALAPA Awards

City of Auburn, Alabama

COMPLAN 2030

THE COMPREHENSIVE PLAN FOR THE CITY OF AUBURN

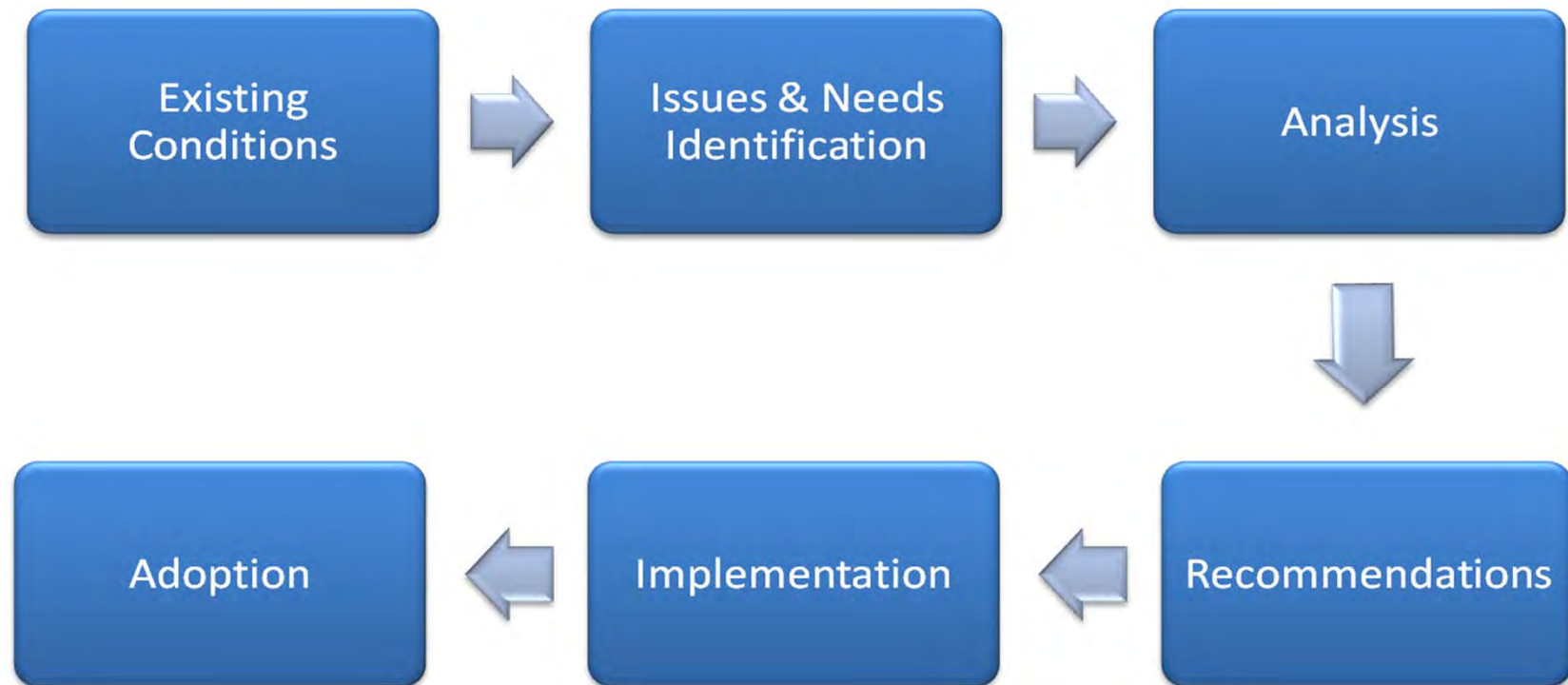
Nominated by Justin P. Steinman

*Alabama Chapter of the American
Planning Association*



2012 ALAPA Awards

Auburn CompPlan 2030 Process

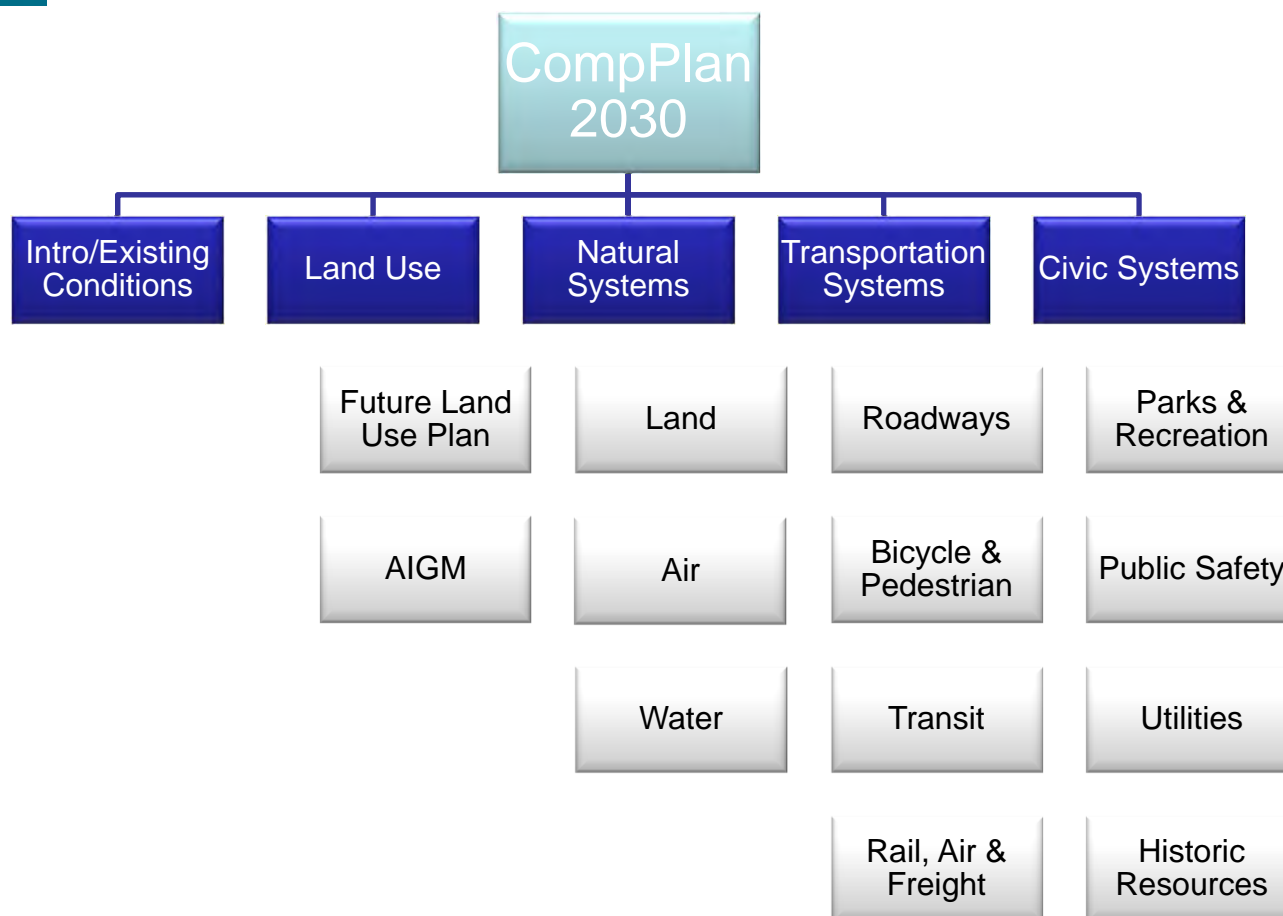


*Alabama Chapter of the American
Planning Association*



2012 ALAPA Awards

Auburn CompPlan 2030 Structure



*Alabama Chapter of the American
Planning Association*



2012 ALAPA Awards

Auburn CompPlan 2030 Process



*Alabama Chapter of the American
Planning Association*



2012 ALAPA Awards

Auburn CompPlan 2030 Annexation Model

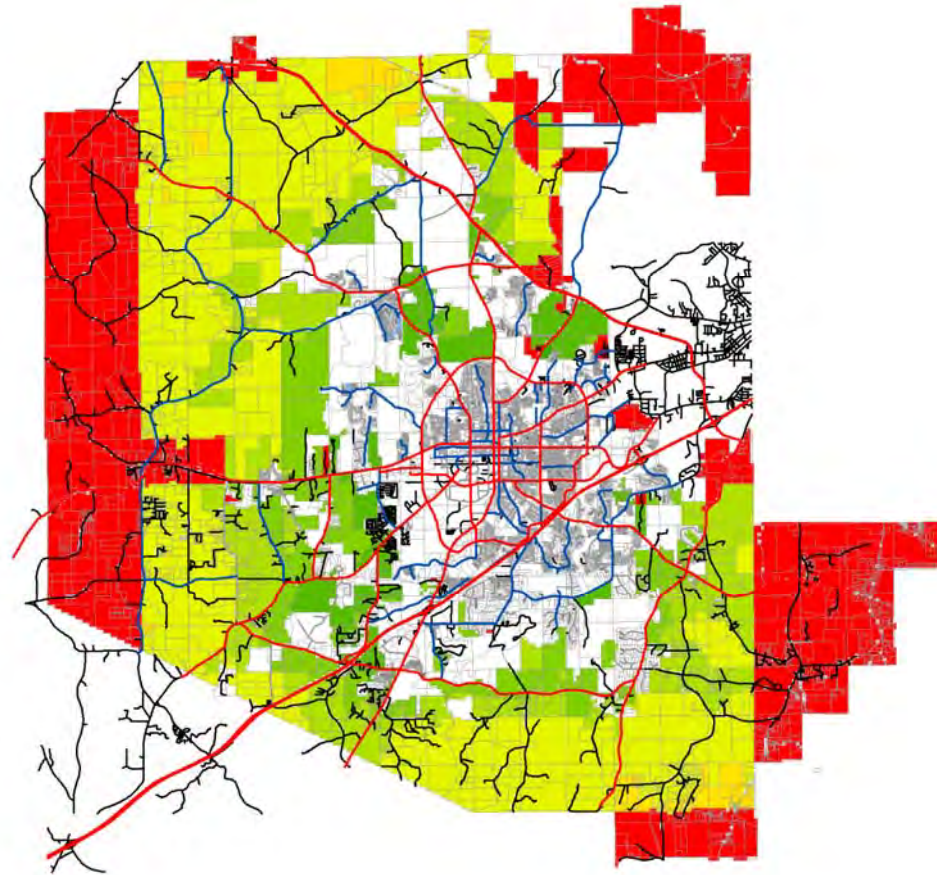


*Alabama Chapter of the American
Planning Association*



2012 ALAPA Awards

Auburn CompPlan 2030 Annexation Model



*Alabama Chapter of the American
Planning Association*

[illegible]

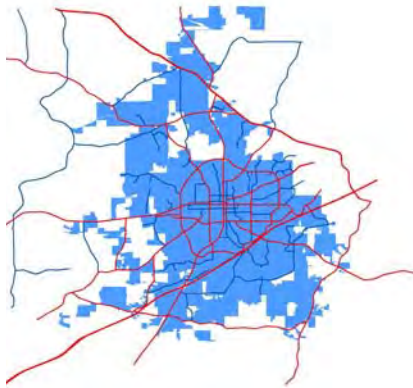
*Alabama Chapter of the American
Planning Association*



2012 ALAPA Awards

Auburn CompPlan 2030 Annexation Scenarios

2009 Baseline Scenario



- Uses existing city limits and zoning
- Assumes area outside city develops at 1 unit per acre
- Updated annually

Optimal Boundary Scenario



- Uses existing zoning inside city limits (blue)
- Assumes optimal boundary (orange) will develop at 1 unit per 3 acres
- Optimal boundary will be part of City by 2030

Concept Plan Scenario



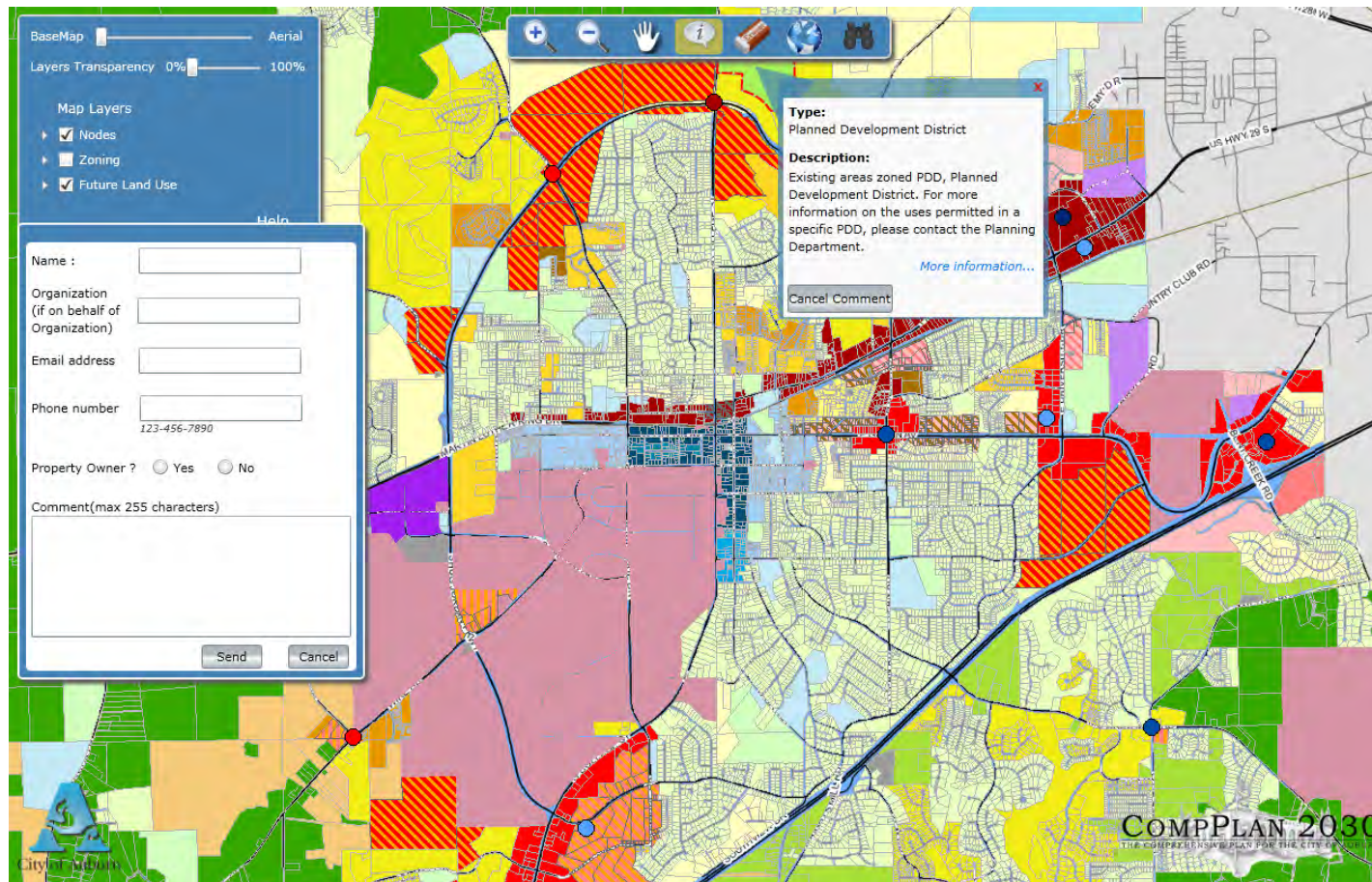
- Tested effect of focusing development within the existing city limits
- Future Land Use Plan was developed from this scenario

*Alabama Chapter of the American
Planning Association*



2012 ALAPA Awards

Auburn CompPlan 2030 Interactive Land Use Plan



*Alabama Chapter of the American
Planning Association*