



2012 ALAPA Awards

Distinguished Leadership Award for an Elected Public Official

*Recognizes an elected public official who has made
significant contributions and demonstrated strong support for
planning in Alabama.*

*Alabama Chapter of the American
Planning Association*



2012 ALAPA Awards

Elected Public Official

Hon. Ray Nelson
City of Fayette, Alabama



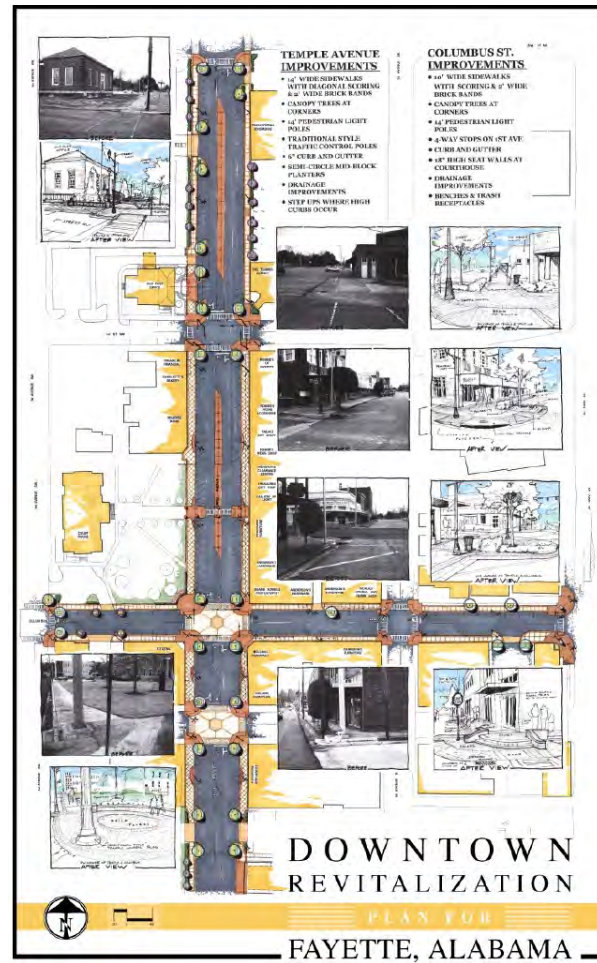
Nominated by Larry Watts, FAICP

*Alabama Chapter of the American
Planning Association*



2012 ALAPA Awards

Elected Public Official

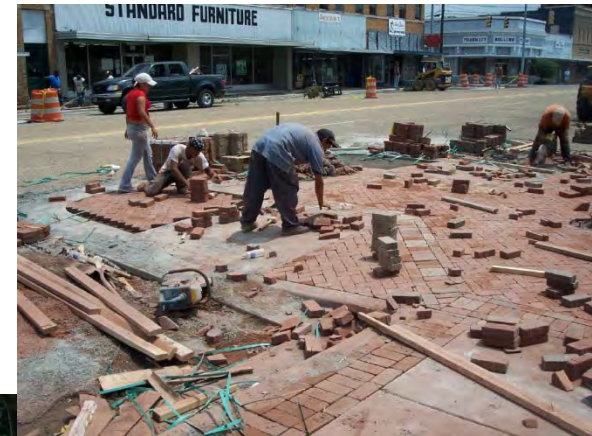


*Alabama Chapter of the American
Planning Association*



2012 ALAPA Awards

Elected Public Official



*Alabama Chapter of the American
Planning Association*



2012 ALAPA Awards

Elected Public Official



*Alabama Chapter of the American
Planning Association*



2012 ALAPA Awards

Elected Public Official



*Alabama Chapter of the American
Planning Association*



2012 ALAPA Awards

Elected Public Official

Fayette Comprehensive Community Master Plan

IMPLEMENTATION OF THE PLAN

Recommendation Action Items

For each of the Comprehensive Community Master Plan objectives and recommendations, there are action steps that should be considered in order to implement the policies or recommendations. These action items may change, over time, however it is important to identify some of these as a next step. Previous and current plans should be continuously updated and implemented to ensure results and take advantage of momentum.

Priorities and Time Frame

Priorities may be considered generally, as short-term (0-2 years), mid-term (3-5 years) and long-term (6-20 years). These designations take into account the importance of a recommendation as well as a sense of time sensitivity or urgency.

Financing and Funding and Public/Private Investments

It should not be presumed that the Comprehensive Community Master Plan is implemented by city resources alone. Most of the Plan recommendations will be implemented by the private sector. The city's goal is leveraging and supporting private sector resources to accomplish the desired results. Plan implementation should also be seen as an investment strategy and not just spending public funds.

Financing and funding of city initiatives should include the use of city funds; grants; loans; other incentives and special funding generated through related development authorities such as a Commercial Development Authority, Chamber of Commerce, Industrial Development Board or Economic Development Authority (county or regional), a Land Trust and other public-private development organizations (community development corporations) in addition to more common development authorities such as the utility board, school board, park board, etc.

It should be noted that any action requiring expenditure of funds will be subject to appropriate public hearings and review, consistent with the city's public hearing and open meeting law requirements.

Regulatory Tools

Certain regulatory tools are important to the implementation of the Comprehensive Community Master Plan. These tools include zoning ordinance, subdivision regulations, historic districts and design review, others. These tools should be seen as consistent with the Master Plan and amended, as needed, to further the implementation of the Plan.

31

Fayette Comprehensive Community Master Plan

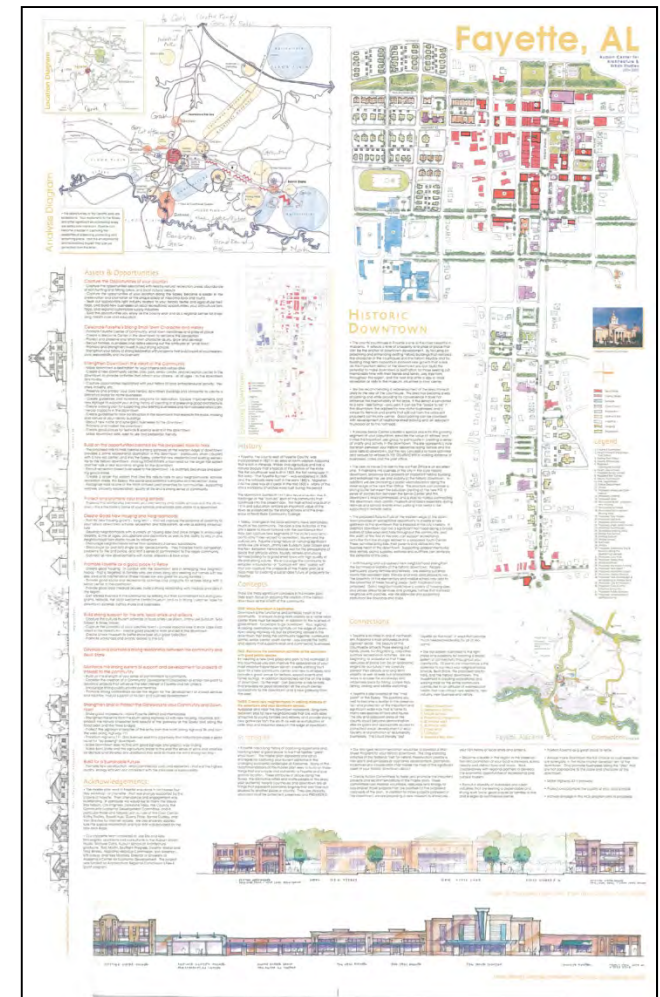
	Recommendation	Responsible Party	Time Frame	Cost and Funding Source
Housing and Neighborhoods (continued)				
	Support new housing developments consistent with land use plan	Planning Commission, City Council		
	Provide for rural residential development and family farms	Planning Commission	Ongoing	TBD
B	Support/ enforce rehab and maintenance of existing housing/ continue housing demolition/ housing abatement	Planning Commission, City Administration, Housing Abatement Committee, CDC	Ongoing	\$50,000 - \$200,000 Annually / USDA
C	Support redevelopment of major revitalization neighborhoods with infrastructure	Planning Commission, Community Development Corporation	Ongoing	> \$1 Million
D	Adopt and enforce residential zoning, subdivision and other standards consistent with land use plan	Planning Commission	2011-2012	Cost Included Above
E	Support the development of senior and retirement housing	City Administration, Hospital, Private	2013	USDA, Private Funding
F	Plan for and support new residential neighborhoods with infrastructure, etc.	City Council, Planning Commission, Private Developers	Ongoing	Private, TBD
G	Support neighborhood and residential developments with "complete streets"	Planning Commission, City Council	Ongoing	See Transportation
H	Support neighborhoods and residential development (consistent with land use plan) with community facilities and services	City Council, Parks Board, School Board, Fire and Police Depts.	Ongoing	T.B.D.
Transportation				
A	Improve US-43 and AL-171 as four-lane facilities from Tuscaloosa to I-22; consider scenic management and landscaping	City Administration, City Council, WABG, ALDOT, Economic Development Committee, Economic Development Authority (EDA)	2020	> \$10 million
	Continue to support West Alabama Freeway and connections to Fayette	City Administration, City Council, WABG, ALDOT, Economic Development Committee, EDA	2020	N/A
	Support other projects as part of West Alabama Rural Transportation Plan and Transportation Improvement Program	City Administration, City Council, WABG, ALDOT	Ongoing	T.B.D.

35



2012 ALAPA Awards

Elected Public Official

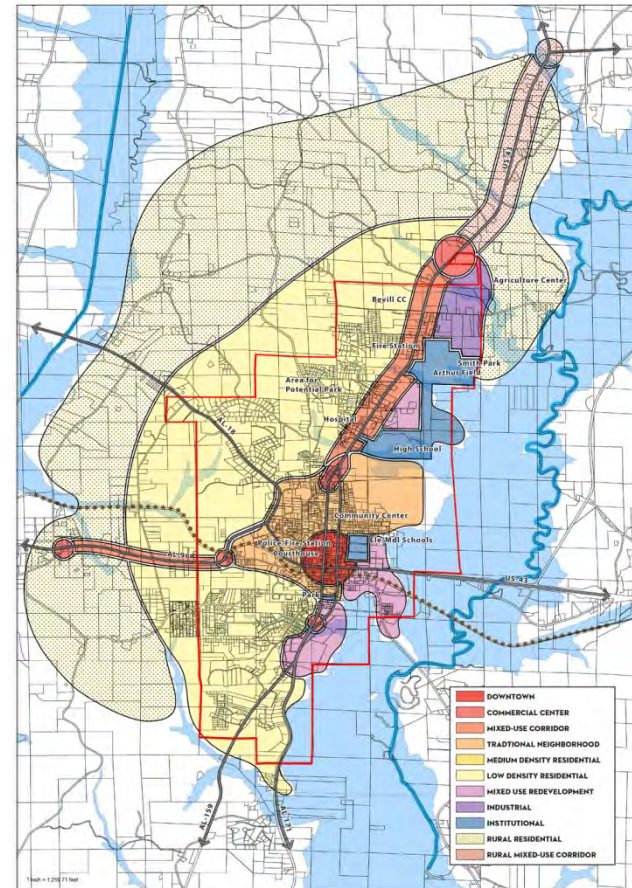
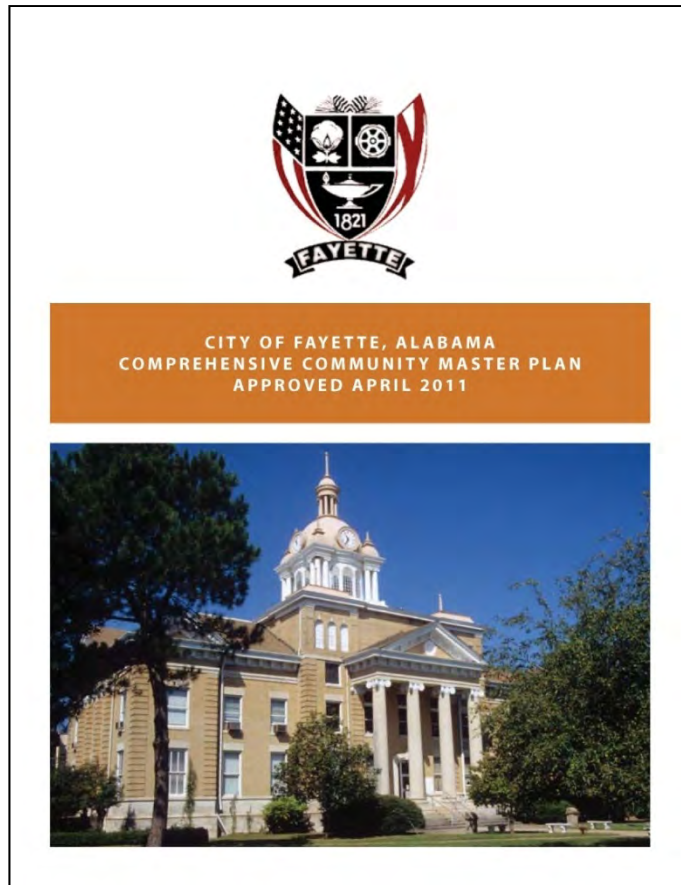


*Alabama Chapter of the American
Planning Association*



2012 ALAPA Awards

Elected Public Official

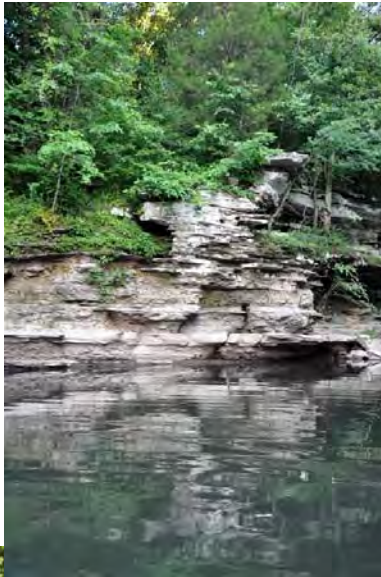


*Alabama Chapter of the American
Planning Association*



2012 ALAPA Awards

Elected Public Official



*Alabama Chapter of the American
Planning Association*



2012 ALAPA Awards

Elected Public Official



*Alabama Chapter of the American
 Planning Association*