



2011 ALAPA Awards

Outstanding Planning Award for a Project/Program/Tool

*This award recognizes an outstanding project, program or tool
that is a significant advancement to the cause of planning.*



2011 ALAPA Awards

*Regional Planning Commission of
Greater Birmingham*

Building Communities Program

Nominated by William R. Foisy

*Alabama Chapter of the American
Planning Association*



Regional Planning Commission of Greater Birmingham

Building Communities Program

The Regional Planning Commission of Greater Birmingham recognized the need to link transportation planning with land use planning, economic development and community design.

The RPCGB created the Building Communities Program to fill this planning void in the region.

Holistic approach to community planning that proactively considers land use and transportation decisions and/or investments rather than being reactive.

Public participation integrated by internalizing community vision developed in a transparent and open process.



*Alabama Chapter of the American
Planning Association*



Regional Planning Commission of Greater Birmingham

Building Communities Program

Program designed to provide funding to local governments to assist in the development and implementation of comprehensive plan documents with strong emphasis on the transportation and land use relationship.

Funded projects must advance the regional goals and objectives articulated in the Birmingham MPO's Long Range Transportation Plan (LRTP).

Program supports land use integration, community design, economic vitality, safety and security, accessibility and mobility, environmental/air quality improvement, and system preservation.





Regional Planning Commission of Greater Birmingham

Building Communities Program

Model for other MPO's in the State of Alabama to

- Address the relationship between transportation and land use, recognizing that land use decisions impact the transportation system and vice-versa.
- Utilize federal transportation planning dollars to provide grants to local communities within the Birmingham MPO to link transportation planning with community planning.
- FHWA support crucial to allow transportation funds to be used for land use studies and community planning.
- Precedent for addressing the multiple issues that contribute to transportation problems, rather than just relying on tradition traffic engineering solutions.





Regional Planning Commission of Greater Birmingham

Building Communities Program

The Building Communities Program continues to receive outstanding support and admiration from the local communities.

City and neighborhood leaders continue to praise the program and seek new ways to receive planning assistance in their communities and bring about positive change in the region.

Programs and projects funded include:



*Alabama Chapter of the American
Planning Association*



Regional Planning Commission of Greater Birmingham

Building Communities Program

City of Graysville

Form-Based Code

City of Birmingham

City Center One-Way Street Conversion Study

Fountain Heights 16th Street Corridor Plan

Collegeville Plan and Access Study

Highland Park Neighborhood Assessment and Zoning Code Review

Concept Feasibility for I-20/59 Lowering

City of Calera

Comprehensive Plan Update

City of Chelsea

Major Street Plan, Zoning Ordinance and Subdivision Regulation Update; Smart Code Overlay

City of Fairfield

Comprehensive Plan

City of Bessemer

Transportation/Transit Plan, SmartCode, Master Plan Update, Form-Based Code Overlay

City of Leeds

Master Plan Update and Major Street Plan

City of Vestavia Hills

Cahaba Heights Neighborhood Plan

Zoning Ordinance and Subdivision Regulation Update

Five Mile Creek Greenway Partnership

Strategic Plan for Implementation of the Trail Location Study

City of Irondale

U.S. 78 Corridor Study

City of Montevallo

Development Regulations in Support of the City of Montevallo Comprehensive Plan

*Alabama Chapter of the American
Planning Association*



Sample Building Communities Projects



Downtown Grayville Form Based Code

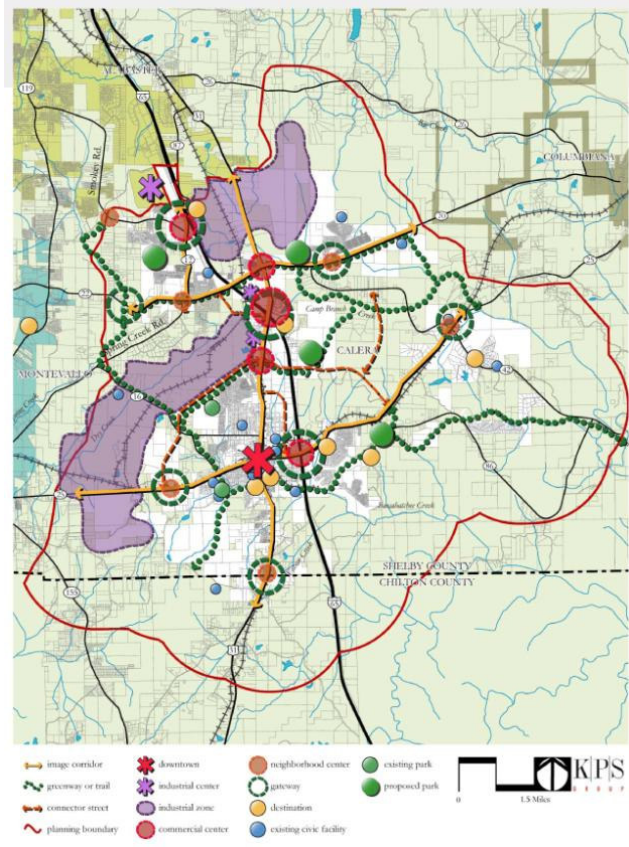


16th Street Corridor Plan

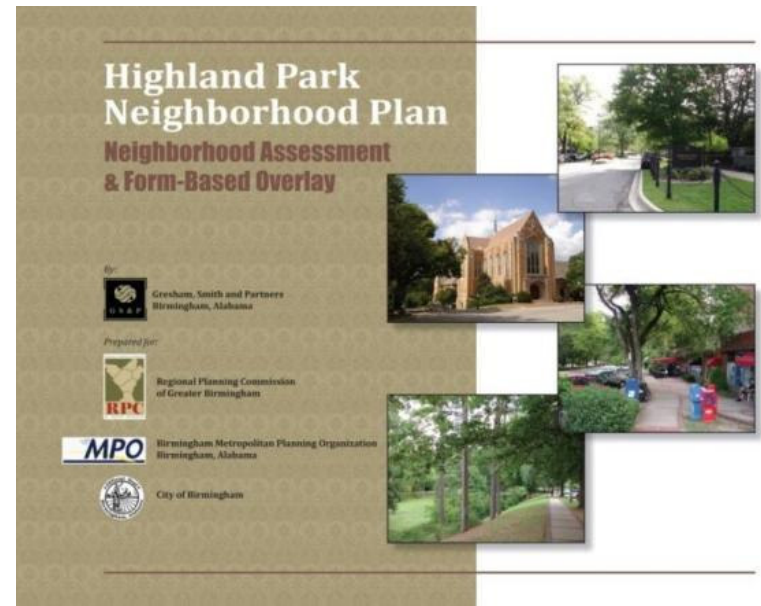
*Alabama Chapter of the American
 Planning Association*



Sample Building Communities Projects



City of Calera Comprehensive Plan Update

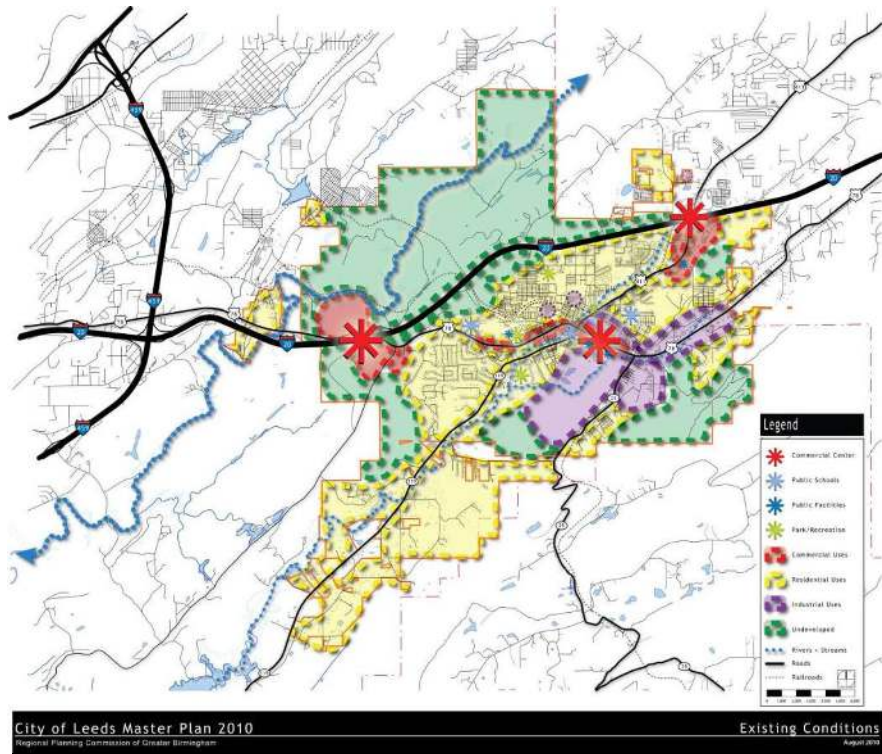


Highland Park Neighborhood Plan

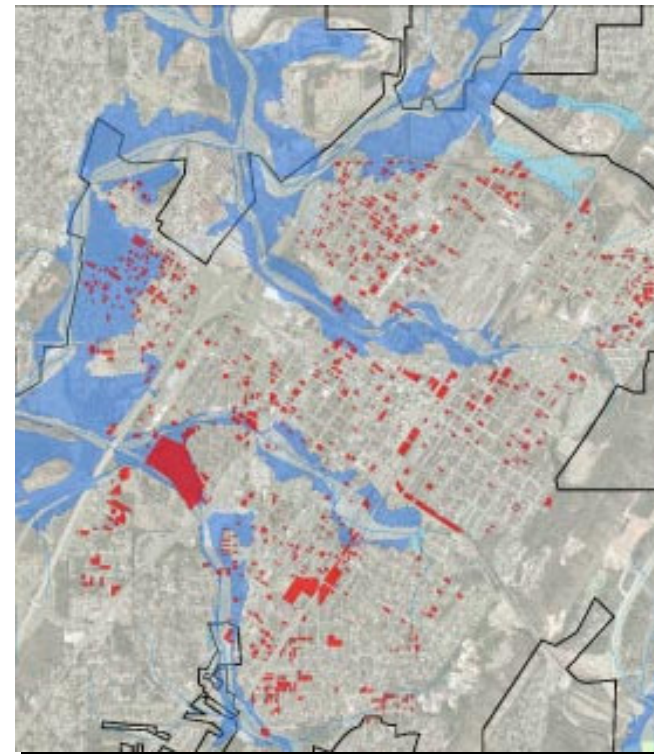
*Alabama Chapter of the American
Planning Association*



Sample Building Communities Projects



City of Leeds Master Plan



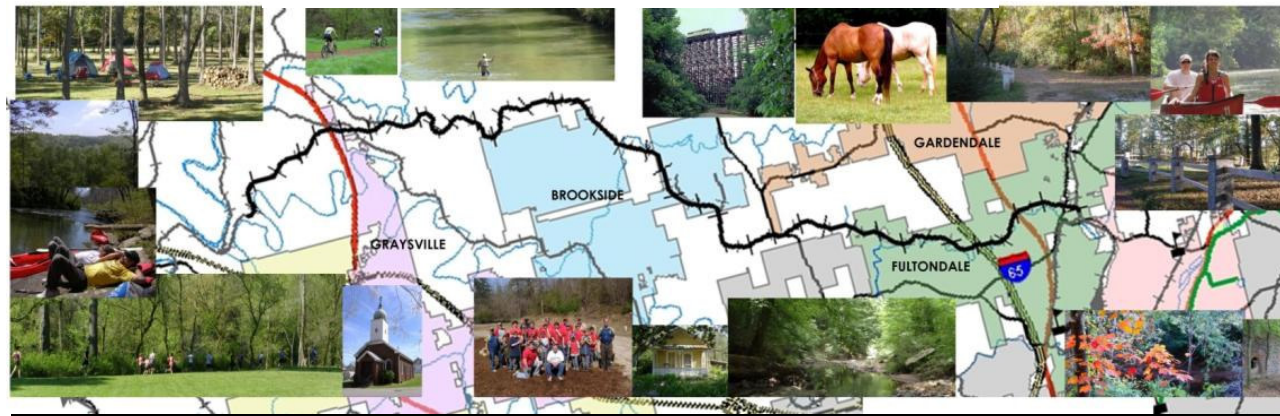
City of Bessemer Master Plan

*Alabama Chapter of the American
Planning Association*



Sample Building Communities Projects

Five Mile Creek Greenway Strategic Plan



City of Fairfield Master Plan



*Alabama Chapter of the American
Planning Association*



Building Communities Program - Implementation

The most dramatic impact of the Building Communities Program is the opportunity for immediate implementation of the plan's recommendations to bring positive change for the neighborhoods and communities in the Greater Birmingham region.



Fountain Heights
Neighborhood, City
of Birmingham

*Alabama Chapter of the American
Planning Association*



2011 ALAPA Awards

Regional Planning Commission of Greater Birmingham

Building Communities Program

Accepting

Charles Ball, Executive Director of RPCGB

*Alabama Chapter of the American
Planning Association*